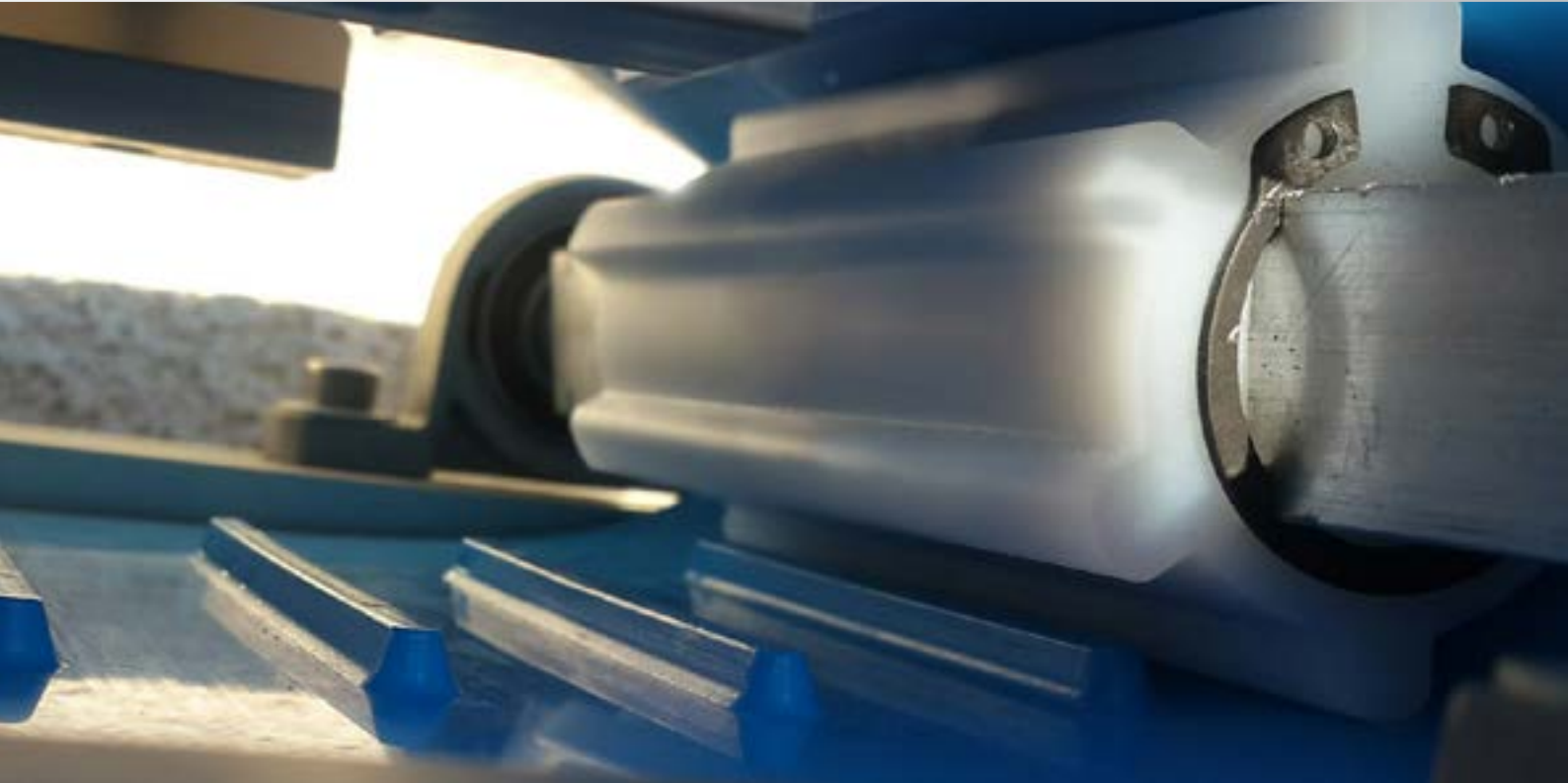




Conveying Solutions
Mini Positive Drive Line



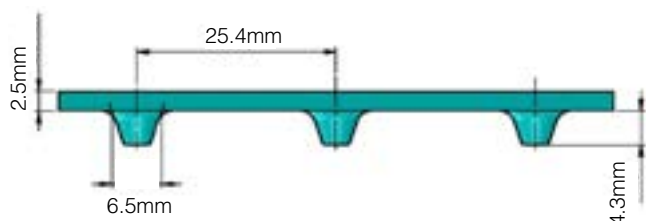
The Next Step in Belting

The new Mini series of Positive Drive products from Volta are designed to suit wet and dry applications in the food industry. We offer a solution to replace friction-driven and modular belts. The Mini range permits relatively small pulley sizes to facilitate tight transfer of products.

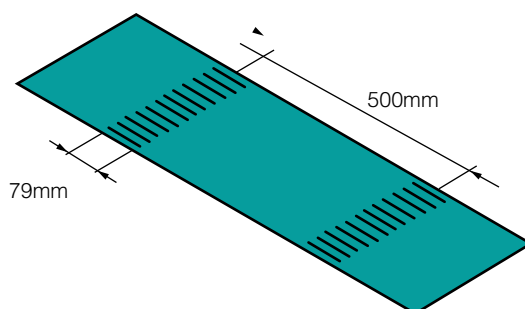
Mini SuperDrive™

The only trackable Mini Positive Drive product.

The MiniSD™ design is similar to the world leader, Volta Super Drive™; scaled down for a smaller minimum pulley. Extruded from unique 53D Shore LTS material for enhanced hydrolytic and chemical resistance.



Base Belt Thickness=2.5mm
 Pitch Between Teeth = 25.4mm/1"
 Tooth Height= 4.3mm
 Tooth Base = 6.5mm
 Tooth Width= 79mm/3.11"
 Distance Between Teeth Rows, Center to Center = 500 mm/20"

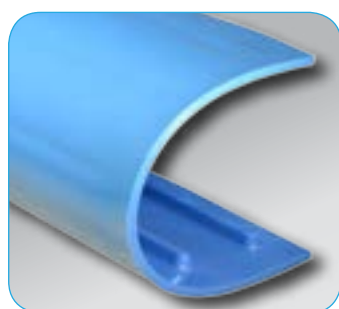


| Product: | FMB-2.5-MSD-LTS | FMB-2.5-MSD-ITO50-LTS |
|--|-----------------------------------|-----------------------|
| Working Surface | | |
| Belt Thickness (mm): | 2.5 | |
| Max Pull Force (kg/cm width) | 3 kg/ cm width – 16.8 lb/in width | |
| Belt Min Pulley Diameter (Normal Flex) | 48 mm / 1.89" | |
| Belt Min Pulley Diameter (Back Flex) | 65 mm / 2.56" | |
| Standard Belt Width | 1200 mm/47.24"; 1000 mm/39.37" | |

MiniSD™ Pulleys

| Number of Teeth | 6 | | 8 | | 10 | | 12 | |
|-----------------------|------|------|------|------|------|------|------|------|
| | mm | inch | mm | inch | mm | inch | mm | inch |
| Pulley Outer Diameter | 48 | 1.89 | 65 | 2.56 | 80 | 3.15 | 96.5 | 3.8 |
| Belt Pitch Diameter | 50.5 | 1.98 | 67.5 | 2.65 | 82.5 | 3.24 | 99 | 3.89 |

Note: Standard Pulley Width - Drive Pulley - 100mm / 4" ; Tail Pulley - 150mm / 6" ; Support Pulley - 50mm / 2".



MiniSD™ belt



Tail Pulley



Drive Pulley



Support Pulley

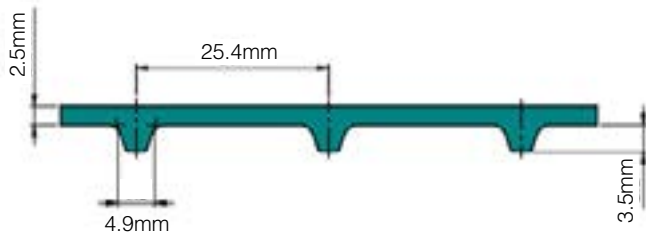
- Ensure a maximum gap of 1/4" between belt teeth and conveyor bed guide strips (a shorter conveyor can be fitted with a higher standard accuracy).
- Use Support Pulleys every 3"- 4" (75-100mm) between centers, according to the load.

Mini DualDrive™



A scaled-down version of the original DualDrive™ tooth geometry.

FMB-2.5 MDD –Homogeneous 95A Shore extrusion with high pull force for heavier loads.

FMB-2.5 MDD LTS –Extruded from 53D Shore LTS material for enhanced hydrolytic and chemical resistance.

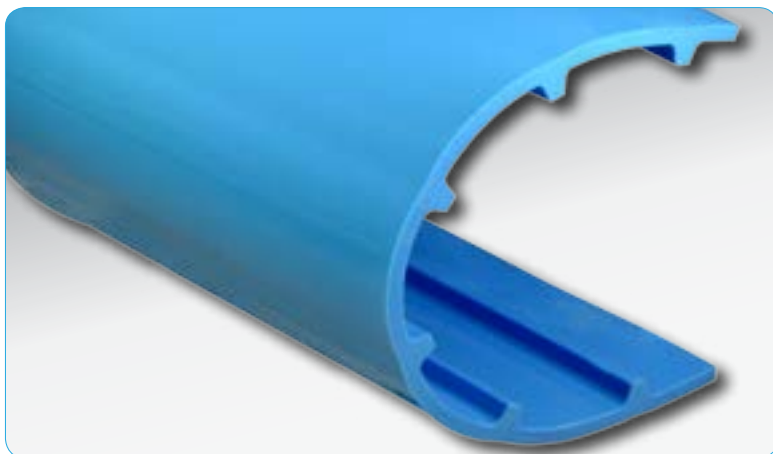


Base Belt Thickness=2.5mm
 Tooth Height= 3.5mm
 Total Belt Height= 6mm
 Tooth Base= 4.9mm
 Pitch Between Teeth : 25.4mm/1"

| Product: | FMB-2.5-MDD | FMB-2.5-MDD-LTS |
|--|--|---|
| Working Surface |  |  |
| Belt Thickness (mm): | 2.5 | 2.5 |
| Max Pull Force (kg/cm width) | 4.5 kg/ cm width-25.2 lb/in width | 3 kg/ cm width-16.8 lb/in width |
| Belt Min Pulley Diameter (Normal Flex) | 48 mm / 1.89" | 48 mm / 1.89" |
| Belt Min Pulley Diameter (Back Flex) | 65 mm / 2.56" | 65 mm / 2.56" |
| Standard Belt Width | 2032 mm / 80" | 2032 mm / 80" |

MiniIDD™ Sprockets

| Number of Teeth | 6 | | 8 | | 10 | | 12 | |
|-------------------------|------|------|------|------|------|------|------|------|
| | mm | inch | mm | inch | mm | inch | mm | inch |
| Sprocket Outer Diameter | 48 | 1.89 | 65 | 2.56 | 80 | 3.15 | 96.5 | 3.8 |
| Belt Pitch Diameter | 50.5 | 1.98 | 67.5 | 2.65 | 82.5 | 3.24 | 99 | 3.89 |
| Sprocket Width | 25 | 1 | 25 | 1 | 25 | 1 | 25 | 1 |



MiniIDD™ belt



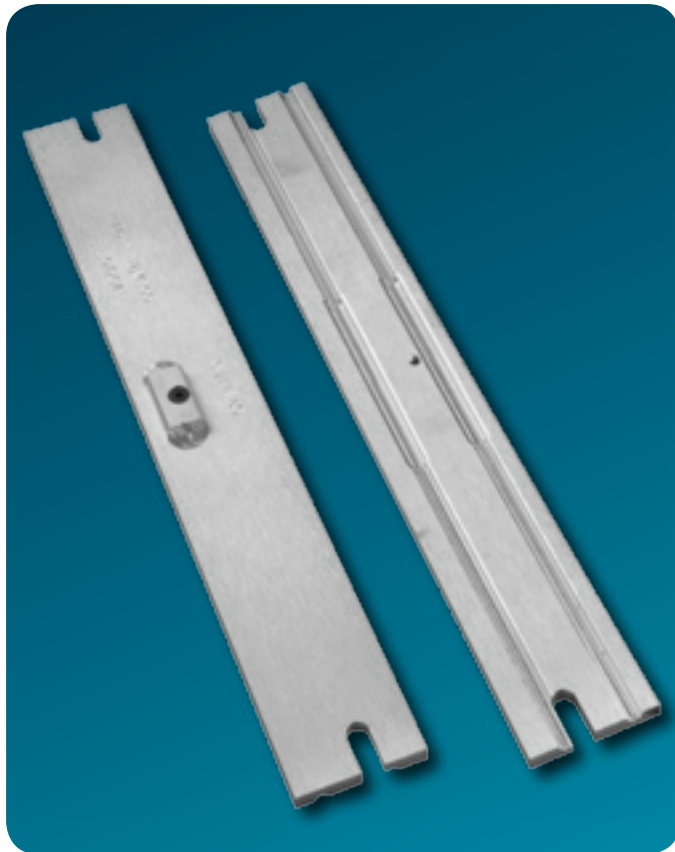
MDD Sprocket

- Use Volta Drive Pulley and Tail Pulley every 3" - 4" (75-100mm) between centers, according to the load.
- Smooth single roller or short individual rollers may be used on the tail side when pulley diameter is larger than 3" / 76mm.

Welding the MiniSD™ and MiniDD™ with Adapter and FBW Tool

To ensure an accurate and efficient weld of MiniSD™ and MiniDD™ belts choose the Adapter suitable to your FBW tool .

The PD 1" adapter is dedicated for welding both belts.



Recommended Conveyor Structure:

- A slide bed made from longitudinal UHMW strips ensures minimal friction between the belt and the support.
- Support rollers on the return side (slack side).
- Use only Volta Pulleys.
- Maximum distance between the belt edge and the outermost UHMW strip: 50mm / 2".
- A take-up device and snub roller are recommended.

Mini SuperDrive™ & Mini DualDrive™ Advantages

- Fully hygienic solution for tight transfer applications.
- Enhanced resistance to a large range of applications.
- Small pitch system to allow fabrications.
- Fully homogeneous – allows simple butt welding with dedicated Volta 1" pitch adaptors and can be done on site with existing Volta FBW welding tools.
- No complex additional mechanisms on the conveyor. Enables the design of total hygienic systems with belt and conveyor designed for lowest levels of contamination and fast, cost-saving wash downs.
- MiniSD™ eliminates off-tracking with no excessive containment needed. Reduces belt and conveyor wear even where side loading is needed.
- The MiniDD™ and MiniSD™ configurations are available with dedicated drive sprockets and pulleys in a range of diameters.



Corporate Headquarters

Sales and Manufacturing
sales@voltabelting.com

USA

• Tel: +1 973 276 7905
• Fax: +1 973 276 7908
• Toll Free: 1-877-VOLTAUS

EUROPE

• Tel: +31-546-580166
• Fax: +31-546-579508

www.voltabelting.com

Volta Belting makes no warranty with respect to any of its products for a particular purpose.
See **Volta** General Terms and Conditions.

Copyright©2016 Volta Belting Technology Ltd.
CAT555EN00- Ver.A.January.2016